

[London Fashion Week's Eco Highlights »](#)

What's Driving Nicola Wood's Beautiful Soul?

[Beautiful Soul](#), the luxury womenswear label sources vintage kimono fabrics and creates stunning, highly wearable design pieces. We met up with Nicola Woods, Beautiful Soul's creative force at London Fashion Week's Estethica exhibition, to discover more about this upcoming design talent and find out about her own beautiful soul.



HAVE WE SPIED A NEW DIRECTION FOR YOUR COLLECTION?

Nicola: I set myself a new brief and a new concept every season, which allows my signature style to evolve. I believe in challenging myself and keeping an open mind. I am confident that you will see another side to Beautiful Soul next season this Spring Summer. I am excited.

IT'S A LUCKY LADY WHO WEARS YOUR STYLES. DESCRIBE HER...

Nicola: Unique, without being overstated. Spirited and self assured.

WHAT MAKES BEAUTIFUL SOUL SO UNIQUE?

Nicola: Individuality is a key factor in Beautiful Soul's design process. Women these days aren't taken in by throwaway fashion, and seek to buy and wear clothes that are unique and timeless. The use of vintage Japanese kimonos offers exclusivity to the wearer.

Beautiful Soul's pieces are directional and elegant, but it is their multi-functionality that renders the garments timeless. The garments adjust and can be worn in a multitude of ways to suit different moods and seasons.

Furthermore, garment adjustability is key to Beautiful Soul's design ethos, which offers a versatility that is determined by change in body contours. I believe this is important to a women, as her favourite piece can be cherished for a lifetime.

Share some GIN



Subscribe to GIN Blog

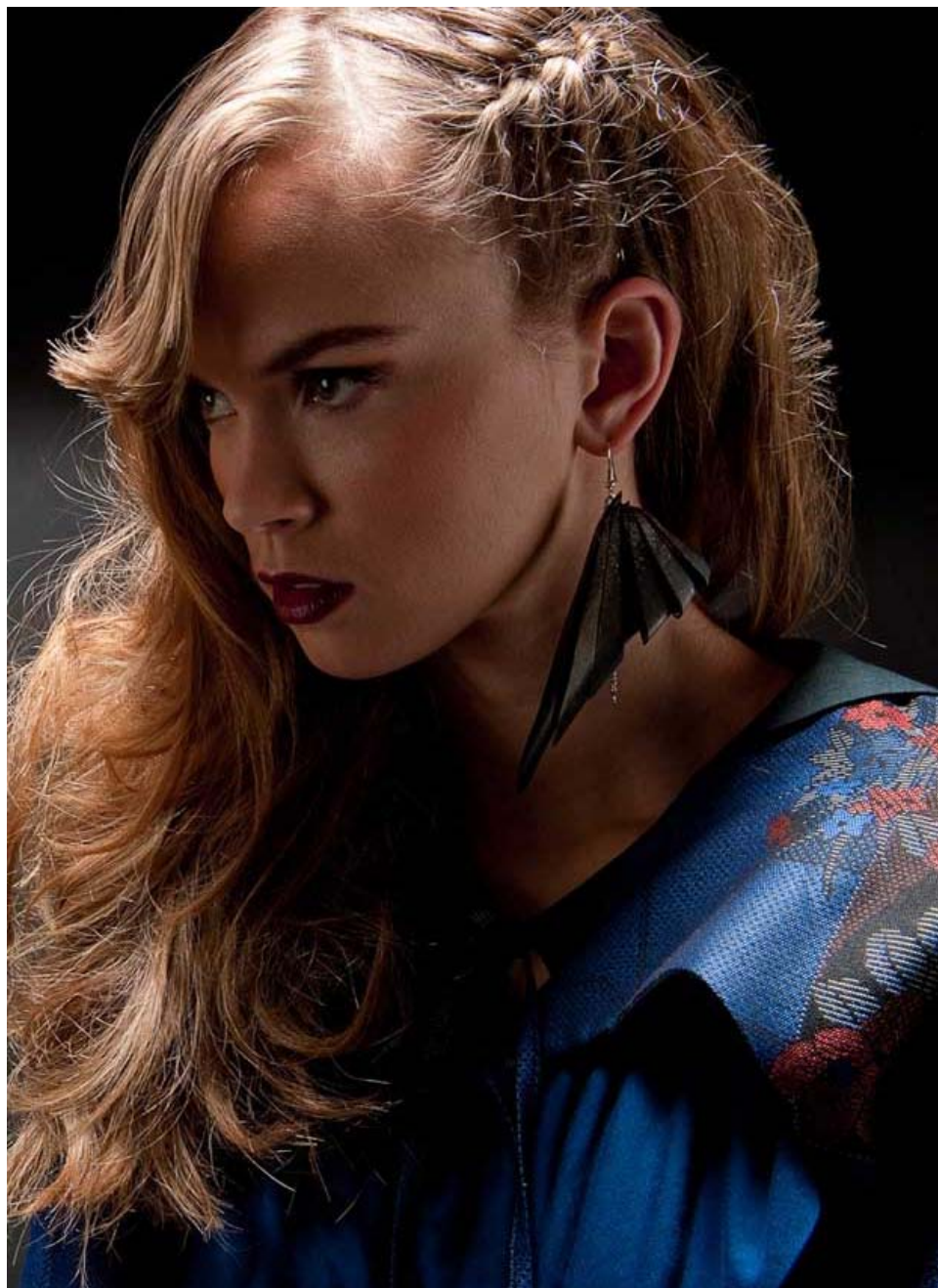
[The GIN Lady Blog RSS](#)

GIN Articles

- [Arts & Culture](#) (2)
- [Bumps, Babes & Kids](#) (4)
- [Carbon Friendly Travel](#) (2)
- [Eco Chic Decor](#) (5)
- [Ethical Fashion](#) (36)
- [Fairtrade Sex](#) (3)
- [Gift Guide](#) (2)
- [Green Turf](#) (1)
- [Natural Beauty](#) (5)
- [News & Views](#) (14)
- [Out & About](#) (5)
- [Seasonal Celebrations](#) (5)
- [Seasonal Larder](#) (7)
- [Sustainable Building](#) (1)
- [The GIN Lady Tour](#) (3)

GIN LOVING ADS





YOUR FAVOURITE PIECE IN YOUR A/W COLLECTION?

Nicola: I have been wearing a different piece every day during London Fashion Week. I am enjoying the Suzu and Ko Sleeve Jackets and equally the Hana Jacket. These pieces are all made from vintage Japanese kimonos and are exclusive to the wearer. I love being original, and working as a designer who is passionate about fabric.

I am also very attached to the ruby red coats, they are made from British wool, sourced from Izzy Lane and are lined with organic jacquard, sourced from Lucy Tammam... the fabric combination is scrumptious!





WHO IS YOUR STYLE ICON?

Nicola: A cross between Audrey Hepburn, Sophie Ellis Bextor and Paloma Faith. Also, I have recently fallen in love with Gabby Young (Singer/Songwriter). She is incredible. Quirky and classic rolled into one.

YOUR FIRST FASHION MEMORY WAS...

Nicola: I remember writing to 'Jim'll fix it' to make me a fashion designer! Life has twists and turns; My wish has finally become a reality.



Blogs I Like Reading



ETHICAL FASHION
[Eco Fashion Blogs](#)

[Eco Fashion World](#)
[Ethical Style](#)
[Quail By Mail Blogspot](#)
[Eloise Grey Blog](#)
[GreenMyStyle.com](#)
[Curious Tales](#)

GREEN LIFESTYLE
[Hippy Shopper](#)
[Eco Trend Spotter](#)
[Green Girls Global](#)



HAVE YOU A FAVOURITE PLACE FOR DESIGN INSPIRATION:

Nicola: A place where my kalma is calm.

Thanks Nicola for sharing your Beautiful Soul. The photographs used in this interview are Beautiful Soul's upcoming collection for Autumn Winter. To view this label's current collection and discover their latest news, please visit [Beautiful Soul's website](#).

Feb 25, 2010 | [Share Article](#) | [Email Article](#) | [Print Article](#) | [Post a Comment](#) | [Permalink](#)
tagged [Beautiful Soul Label](#), [Design Inspiration](#), [Luxury Ethical Womenswear Label](#), [Nicola Woods Designer](#), [Nicola Woods Interview](#), [Vintage Kimono Fabrics](#) in [Ethical Fashion](#)

Reader Comments

There are no comments for this journal entry. To create a new comment, use the form below.

[Post a New Comment](#)

Enter your information below to add a new comment.

[My response is on my own website »](#)

Author:

Author Email (optional):

Author URL (optional):

Post:



Some HTML allowed: `` `<abbr title="">` `<acronym title="">` `` `<blockquote cite="">` `<code>` `` `<i>` `<strike>` ``

Are you under the GIN influence?

[ABOUT US](#) [ETHICAL ADVERTISING](#) [PRIVACY POLICY](#) [READ OUR NEWSLETTER](#)

Copyright © 2008-9, Hippy Publishing Ltd. All rights reserved. Blog, News and Magazine posts are strictly editorial, and no amount of money will coerce The Gin Lady to say something she doesn't believe in. No responsibility however can be held for any inadvertent errors. Thank you for reading.